



Fireworks / Pop-up menus

[Create menus](#)

[Change the appearance of a pop-up menu](#)

[Add custom menu styles to the Pop-up Menu Editor](#)

[Set advanced cell properties](#)

[Change the position of pop-up menus and submenus](#)

[Edit or move items in pop-up menus](#)

[Exporting pop-up menus](#)

Pop-up menus are displayed in a browser when the user moves a pointer over or clicks a triggering web object, such as a slice or hotspot.

- Each pop-up menu item appears as an HTML or image cell. The cell has an Up state, an Over state, and text in both states.
- You can attach URL links to pop-up menu items for navigation, and you can create as many submenu levels as you like in pop-up menus.
- You can use any or all of the tabs and can edit tab settings at any time.
- You must add at least one menu item in the Contents tab to create a menu option you can preview in a browser.
- To preview a pop-up menu, press F12. Pop-up menus don't display in the Fireworks workspace.

Create menus

[To the top](#)

Create a simple pop-up menu

1. Select a hotspot or slice that becomes the trigger area for the pop-up menu.
2. Do one of the following:
 - Select Modify > Pop-up Menu > Add Pop-up Menu.
 - Click the behavior handle in the middle of the slice and select Add Pop-up Menu.
3. Click the Content tab and then click the Add Menu.
4. Double-click each cell and enter or select the appropriate Text, Link, and Target information. For the Link and Target fields, enter custom information or select from the displayed menus. Entering content on the last line in the window adds an empty line below it.

Press the Tab key to move between cells and the Up Arrow and Down Arrow keys to scroll through the list vertically.

5. Repeat steps 3 and 4 until you have added all menu items. To delete a menu item, click the Delete Menu button.
6. Click Next or Done, or select another tab.

In the workspace, the hotspot or slice on which you built the pop-up menu displays a blue behavior line attached to an outline of the top level of the pop-up menu.

Create submenus within a pop-up menu

Submenus are pop-up menus that appear when the user moves the pointer over or clicks another pop-up menu item. You can create as many levels of submenus as you want.

1. Open the Content tab of the Pop-up Menu Editor and create menu items. Place the menu items that you wish to use for the submenu directly under the menu item for which they will be a submenu.
2. Highlight a pop-up menu item that you wish to make a submenu item, and then click the Indent Menu button.

3. To add the next item to the submenu, highlight it and click Indent Menu. Or, to insert a new item just below the highlighted item, highlight a menu or submenu item and click Add Menu.

All items that are contiguously indented at the same level constitute a single pop-up submenu.

4. To create a submenu within a pop-up submenu, highlight a submenu item in the Content tab of the Pop-up Menu Editor, and then click the Indent Menu button again.
5. Click Next to continue building the pop-up menu, or click Done.

Change the appearance of a pop-up menu

[To the top](#)

After you create a basic menu and optional submenus, you can format the text, apply graphic styles to the Over and Up states, and select vertical or horizontal orientation in the Appearance tab of the Pop-up Menu Editor.

1. With the pop-up menu open in the Pop-up Menu Editor, click the Appearance tab.
2. Select Vertical or Horizontal from Choose Alignment Of The Pop-up Menu.
3. Select a Cells option:

HTML Sets the menu's appearance using only HTML code. This setting produces pages with smaller file sizes.

Image Gives you a selection of graphic image styles to use as the cell background. This setting produces pages with larger file sizes.

4. Select a preset size from the Size pop-up menu or enter a value in the Size text box.

Note: When cell width and height are set to Automatic in the Advanced tab of the Pop-up Menu Editor, text size determines the size of graphics associated with the menu item.

5. Select a system font group from the Font pop-up menu, or enter the name of a custom font.

Note: If users don't have the font you select installed on their system, a replacement font will be displayed in their web browser.

6. (Optional) Apply a style, justification, and color to the text.
7. Select the text and cell colors for each state.
8. If Image is selected as the cell type, select a graphical style for each state.
9. Continue building the pop-up menu, or click Done.

Add custom menu styles to the Pop-up Menu Editor

[To the top](#)

Select a cell style for use when Image is selected as the cell style. For more information about styles, see [Create and delete styles](#).

Note: The exact location of the Menu Bars folder varies depending on your operating system. For more information, see [Customize using configuration files](#).

1. Apply any combination of stroke, fill, texture, and Live Filters to an object, and save it as a style using the Styles panel.
2. Select the new style in the Styles panel, and then select Save Style Library from the Styles panel Options menu.
3. Navigate to the Menu Bars folder on your hard disk, rename the style file if you wish, and click Save.

Set advanced cell properties

[To the top](#)

1. Open the Pop-up Menu Editor and click the Advanced tab.
2. Select a width or height constraint from the Automatic/Pixels pop-up menu:

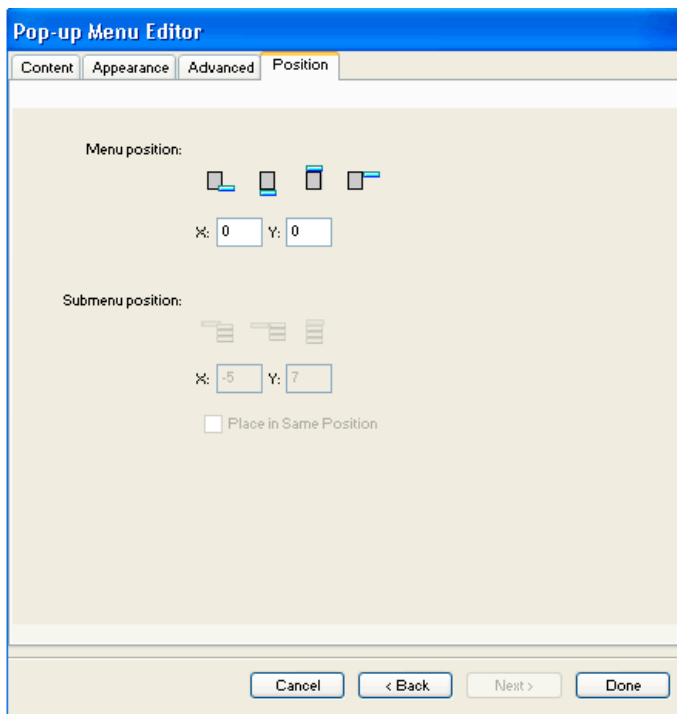
Automatic Forces the cell height to conform to the text size set in the Appearance tab of the Pop-up Menu Editor and the cell width to conform to the menu item that contains the longest text

- Pixels** Allows you to enter specific measurements in pixels in the Cell Width and Cell Height text boxes
3. Enter a value in the Cell Padding text box to determine the distance between pop-up menu text and the edge of the cell.
 4. Enter a value in the Cell Spacing text box to set the amount of space between menu cells.
 5. Enter a value in the Text Indent text box to set the amount of indentation for pop-up menu text.
 6. Enter a value in the Menu Delay text box to set the amount of time in milliseconds that the menu remains visible after the pointer is moved away from it.
 7. Select whether to show or hide pop-up menu borders. If you select to show borders, set the border attributes.
 8. Continue building the pop-up menu, or click Done.

Change the position of pop-up menus and submenus

[To the top](#)

Use the Position tab of the Pop-up Menu Editor to specify a pop-up menu's position. You can also position a top-level pop-up menu by dragging its outline in the workspace when the Web Layer is visible.



Set a specific position for a pop-up menu or submenu

1. With the desired pop-up menu open in the Pop-up Menu Editor, click the Position tab.
2. Do one of the following to define the menu position:
 - Click a Position button to position the pop-up menu relative to the slice that triggers it.
 - Enter x and y coordinates. Coordinates of 0,0 align the upper-left corner of the pop-up menu with the upper-left corner of the slice or hotspot that triggers it.
3. Define a submenu position:
 - Click a Submenu Position button to position the submenu relative to the pop-up menu item that triggers it.
 - Enter x and y coordinates. Coordinates of 0,0 align the upper-left corner of the pop-up submenu with the upper-right corner of the menu or menu item that triggers it.
4. Set a relative position:

- To make each submenu's position relative to the parent menu item that triggers it, deselect Place In Same Position As Parent.
 - To make each submenu's position relative to the parent pop-up menu, select Place In Same Position As Parent.
5. Click Done to close the Pop-up Menu Editor, or click Back to modify properties on other tabs.

Set the position for a pop-up menu by dragging it

1. Do one of the following to display the Web Layer:
 - Click the Show Slices And Hotspots button in the Tools panel.
 - Click the Eye column in the Layers panel.
2. Select the web object that is the trigger for the pop-up menu.
3. Drag the pop-up menu outline to another location in the workspace.

Edit or move items in pop-up menus

[To the top](#)

In the Pop-up Menu Editor, you can edit or update the contents of a pop-up menu, rearrange the menu items, or change other properties on any of the four tabs.

1. Do one of the following to display the Web Layer:
 - Click the Show Slices And Hotspots button in the Tools panel.
 - Click the Eye column in the Layers panel.
2. Select the slice the pop-up menu attaches to.
3. Double-click the pop-up menu's blue outline in the workspace.
4. In the Pop-up Menu Editor, make changes on any tab.

Edit menu text

1. Open the pop-up menu in the Pop-up Menu Editor, and click the Content tab.
2. Double-click the Text, Link, or Target text boxes and edit the menu text. Then click outside the entry list to apply the change.

Move a menu item

1. Highlight the menu item in the Content tab of the Pop-up Menu Editor.
2. Do either of the following:
 - To move the item to a higher-ranking submenu or into the main pop-up menu, click the Outdent Menu button.
 - To move the item to a different location in the same menu, drag the item to the desired location in the list.

Exporting pop-up menus

[To the top](#)

Fireworks generates all the CSS code or JavaScript (depending on which option you select) necessary to view pop-up menus in web browsers.


If you use CSS code for your pop-up menus, a Fireworks document containing pop-up menus is exported to HTML using CSS code. You can also have the CSS code written to an external .css file, and export that file along with an mm_css_menu.js file to the same location as the HTML file.

The alternative to using CSS code is to use JavaScript. If you use JavaScript, a Fireworks document containing pop-up menus is exported to HTML, and a JavaScript file called mm_menu.js is exported to the same location as the HTML file.

When you upload the files, upload mm_css_menu.js (or mm_menu.js, for JavaScript) to the same directory location as the web page containing the pop-up menu. To post the file to a different location, update the hyperlink referencing mm_css_menu.js and the .css file (or mm_menu.js) in the Fireworks HTML code to reflect the custom location. A unique .css file is exported for every document containing CSS pop-up menus that you export as HTML and images from Fireworks.

When you include submenus, Fireworks generates an image file (arrows.gif), which is a tiny arrow that appears next to any menu entry that has a submenu. Regardless of the number of submenus a document contains, Fireworks always uses the same arrows.gif file.

For more information about exporting HTML, see [Export HTML](#).

 Twitter™ and Facebook posts are not covered under the terms of Creative Commons.

[Legal Notices](#) | [Online Privacy Policy](#)